

1) S/N Maintenance

From DCC Ver3.3.1.0, projector S/N maintenance function is available.

In below cases, recover S/N by using the function.

Case1) S/N has been changed to unexpected number like below.

The image shows a projector's status menu and a physical label. The status menu is titled 'INFO.' and has tabs for 'TITLE', 'INFO.', 'SETUP', and 'LAN'. Under the 'INFO.' tab, there are sub-tabs for 'Status', 'Status2', and 'Log'. The 'Status' tab is selected, showing the following information:

System	NC1200C
Serial	98A0003JS2
BIOS	Ver0.75
Firmware	Ver3.221
Data	Ver3.221
System Usage	4159 [H]
IP Address*	10.32.80.47 / 25
MAC Address	00-A0-B0-E4-D8-3F

To the left of the menu is a physical label with a barcode. The label contains the text 'NC2000C' and '98A0006JS2'. A red arrow points from the '98A0006JS2' on the label to the '98A0003JS2' in the status menu.

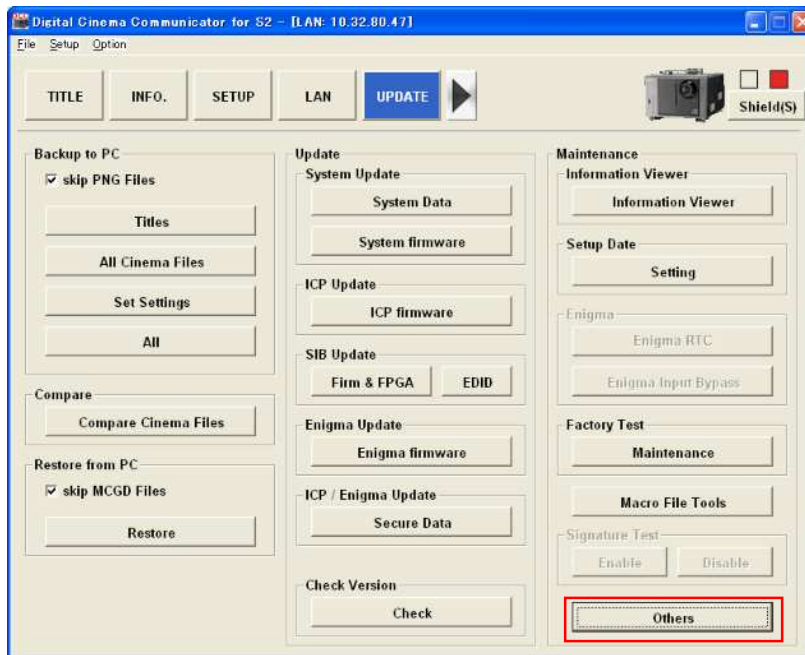
Case2) Replacing either of CPU/KEY/DIV board.(Both of brand-new and used)

After replacement, DO NOT power on the projector before the S/N maintenance.

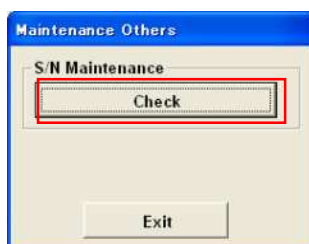
Also changing the projector setting.(e.g. LAN Setting, Option Slot Setting, Date/Time)

Recovery procedure

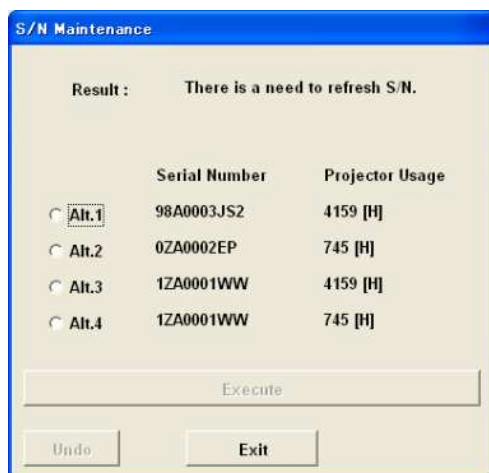
- 1-1) PJ Standby
- 1-2) Set the IP address of PC in a network same as a projector.
- 1-3) Launch DCC(Ver3.3.1.0) and Login to Service Mode
- 1-4) Click on "Others" button.



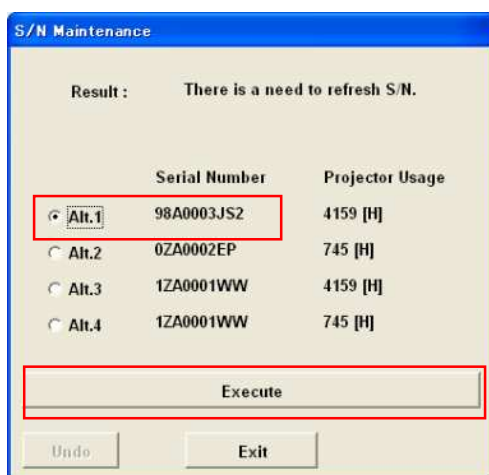
- 1-5) Click on "Check" button, DCC starts to check the S/N in CPU/KEY/DIV board.



- 1-6) List of S/N alternatives for the projector is shown like below.



- 1-7) Select the proper alternative for the projector following S/N label or something.
Then click on "Execute" button.



- 1-8) Check if the Serial Number and Usage is correct.
Click on [Y] button, S/N and usage will be serviced on the projector automatically.



- 1-9) When S/N is serviced successful, the next message is showing.

Click on "Exit" button.

* "Undo" button can back to 5), S/N becomes the value before the recovery



Note: Undo for step 6). One time only available.

2) Display DLP Ack Fail detail info

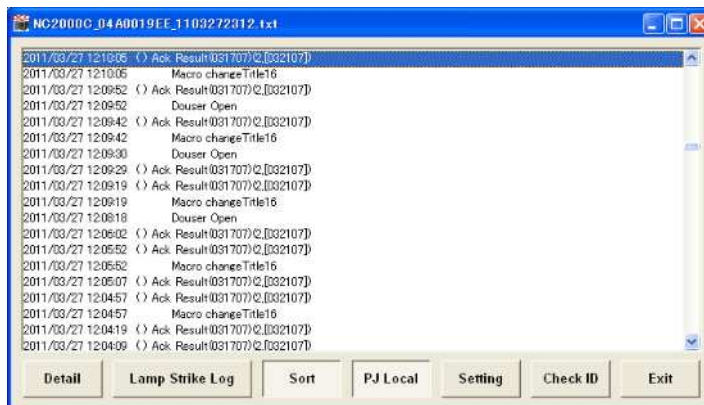
Detail information of DLP Ack Fail can be shown in information viewer.

"Detail" button is support to research the "ACK Result" error in Save Info.

2-1) Show a log in the Information Viewer.

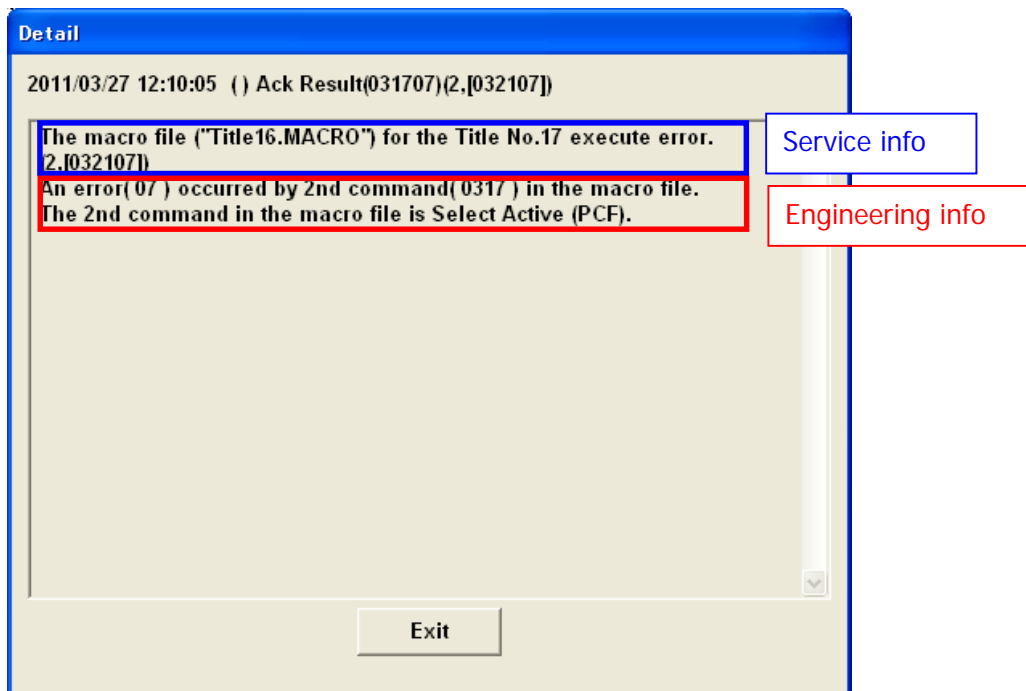
2-2) Sort the logs in time order.

2-3) Select the [Ack Result] log close to DLP Ack Fail.



2-4) Press the "Detail" button.

2-5) Display the detail information.

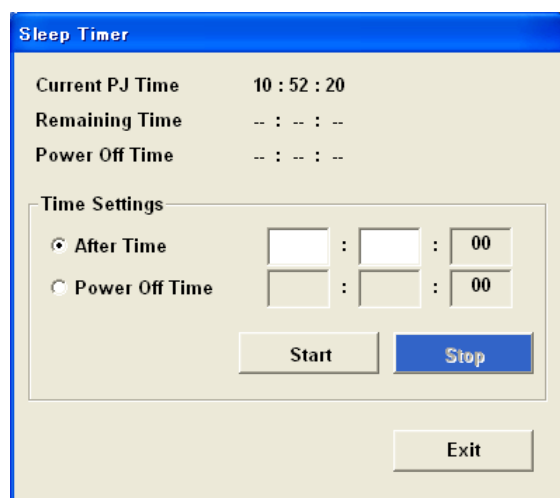


3) Sleep Timer

Press the "Setting" button in the Sleep Timer of the SETUP screen.

In this screen, you can configure the PJ power off time.

You can select either of Remaining Time or Power Off Time



Current PJ Time	Indicate the current time in PJ's time
Remaining Time	Indicate the remaining time until power off
Power Off Time	Indicate the power off time
"After Time"	Used to enter the remaining time. from 00:01 to 23:59
"Power Off Time"	Used to enter the power off time from 00:00 to 23:59
"Start" button	Used to start the sleep timer counter
"Stop" button	Used to stop the sleep timer counter
"Exit" button	Closes the Compare windows.

4) Debug log option

Press the "Setting" button in the Debug Option of the UPDATE screen.

In this screen, you can configure the debug option for examination to several problems.

The debug log will be added into operation log by change the setting of Debug Option.

Please follow engineer advise in actual use.

Debug Option

IMB Login Log ☐ Enable ☒ Disable

Douser Debug Log ☐ Enable ☒ Disable

Lens Memory Log ☐ Enable ☒ Disable

Lamp Memory Log ☐ Enable ☒ Disable

Web Server ☒ Enable ☐ Disable

Title Select Log ☐ Enable ☒ Disable

ICP Command Input

CMD1	CMD2	CMD3	Length	D1	D2	D3	D4	D5	D6	D7	D8
02	F1	00	0	00	00	00	00	00	00	00	00

Output File Import File Apply Exit

"Output File" button	Used to create the OPT file that is copied current setting.
"Import File" button	Used to call an existing OPT file.
"Apply" button	Used to apply the entered settings.
"Exit" button	Closes the Compare windows.